

To:

Love:

I love you
with every
fiber of my bean!



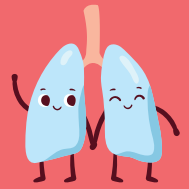
Have a Heart - To - Heart this National Donor Day 2/14 and register your decision at [ConnectLife.org/Register](https://www.ConnectLife.org/Register)



To:

Love:

We be-lung
together forever!



Have a Heart - To - Heart this National Donor Day 2/14 and register your decision at [ConnectLife.org/Register](https://www.ConnectLife.org/Register)



To:

Love:

Eye
love you
so much!



Have a Heart - To - Heart this National Donor Day 2/14 and register your decision at [ConnectLife.org/Register](https://www.ConnectLife.org/Register)



To:

Love:

I would let
my heart be
yours!



Have a Heart - To - Heart this National Donor Day 2/14 and register your decision at [ConnectLife.org/Register](https://www.ConnectLife.org/Register)



To:

Love:

I could not
liver
without you!



Have a Heart - To - Heart this National Donor Day 2/14 and register your decision at [ConnectLife.org/Register](https://www.ConnectLife.org/Register)



To:

Love:

I want tibia
your valentine!



Have a Heart - To - Heart this National Donor Day 2/14 and register your decision at [ConnectLife.org/Register](https://www.ConnectLife.org/Register)



INSTRUCTIONS: Step 1: Print out the card.
Step 2: Cut along the  lines.
Step 3: Share your decision around organ, eye, and tissue donation with those you love.

